

MODEL MK-101CMP

PLETHYSMOMETER FOR RATS AND MICE



Introduction

MK-101CMP is a plethysmometer designed for precise and rapid screening of small rodents for inflammation or edema of the paw. The volume is determined by weight and specific gravity, based on the principle of Archimedes. When the animal paw is dipped into the water in the cell, down to the point pre-marked on the paw, the exact volume of the paw will be displayed. A finger rest enables stable measurement to be made.

Using the DCS-101 Data Collection Software the data obtained can be exported to a personal computer and stored as a CSV file. Printer is available as an optional extra in two types --- Thermal and Dot-Impact.

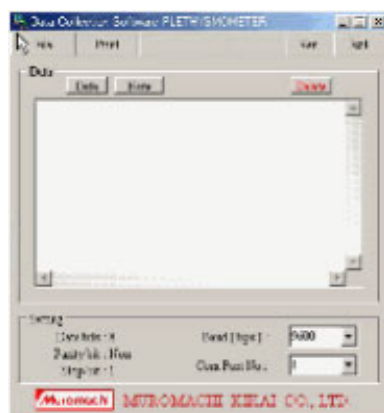
Main Features

- **It can cover three types of measurements ----- Rat (Carrageenan, Adjuvant) and Mouse**
- **Each sensor is independent of the main unit and can be easily replaced.**
- **A surfactant or salt solution is no longer required. Only tap water is good enough.**
- An LED digital display shows the exact volume of the paw.
- A finger rest enables stable measurement to be made.
- High resolution volume measurement (RAT:0.01 ml, MOUSE:0.001 ml)
- Zero can be reset at any point.
- Both printer and RS-232C outputs are provided on the rear panel.
- The DCS-101 Data Collection Software is included in the standard system.

Specifications	
Measurement Range	Rat : 0-7 ml Mouse : 0-0.5 ml
Display	LED, 3 digits
Output	Printer and RS232C
Power Requirements	100V 50/60Hz
Power Consumption	30 Watts
Instrument Dimensions	200W x 200D x 140 mmH
Sensor Dimensions	170W x 170D x 190 mmH
Instrument weight	3.2 kg

MK-101CMP Standard System Includes:	
Main Unit	1
Pedal Switch	1
Zero Switch	1
Measurement Cell (Rat and Mouse)	2
Sensor	1
Finger Rest	1
DCS-101 Data Collection Software	1
RS232C Communication Cable (1.5 m)	1
Operation Manual	1

Optional Extra
Dot-Impact Printer
Thermal Printer



Data Collection Software



Thermal Printer



Dot-Impact Printer

Specifications are subject to change without notice.

MUROMACHI KIKAI CO., LTD.

4-2-12 Nihonbashi-Muromachi, Chuo-ku, Tokyo, 103-0022 JAPAN
E-mail:sales@muromachi.com

MK-101CMP -2 -

TEL:81-3-3241-2444

FAX:81-3-3241-2940